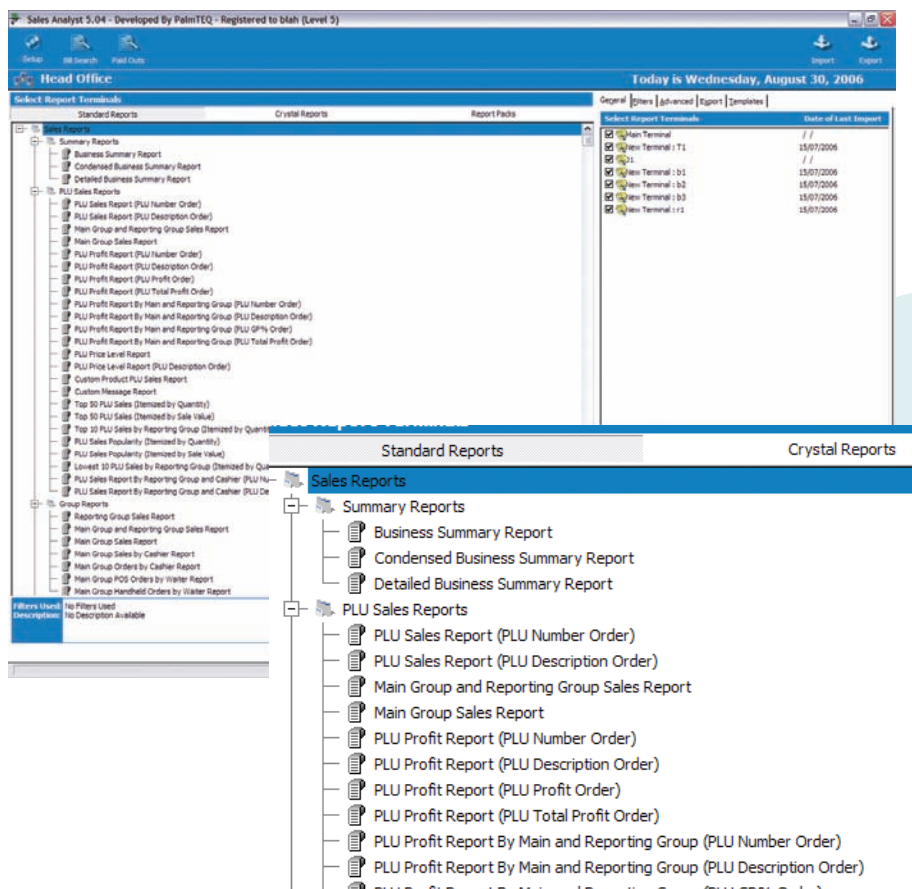


Increasing profits, reducing costs and motivating employees are vital in growing your business. PalmTEQ's Sales Manager is a data collection and reporting tool that will assist you in reaching your goals.



Sales Manager integrates with WaiterPOS and WaiterPAD to store PLU, staff and transaction data. This data can be used to create reports determining the overall sales figures of your business. Sales Manager also allows the operator to view sales for grouped items such as mains, dessert or beverages as well as sales for individual products. This data can be produced for any time period, even a particular day, week or month.

Sales figures can be examined for individual staff members to obtain an accurate idea of their performance within your venue. Particularly in terms of up-selling low cost, high profit items. Sales Manager can be used to assist in motivating staff by supplying information for sales targets or competition between staff. With its integration to WaiterPAD figures can be accurate and dedicated to that single employee.



Sales Manager can also be used to view the specific sales made at each WaiterPOS station, or as an overall business. This allows each WaiterPOS station to operate as a separate business unit within the one restaurant. By creating teams within your wait staff you can establish sales competitions between each WaiterPOS station.

One of the key advantage of Sales Manager is its ability to link multiple locations. This allows head office to monitor the sales of each individual store.

Sales Manager can be integrated with Crystal Reporting. Through Crystal, PalmTEQ has the ability to develop a series of tailored reports to suit your business.

Sales Manager is used by many businesses to develop techniques to boost profits, tighten security and encourage staff to increase sales. It is an important tool to have for any business and as with all of PalmTEQ's products it can be adapted to suit your venue.

Features at a Glance

Application

Sales Manager

Interface

WaiterPOS

WaiterPAD

Features

Accurate data analysis

Standard and custom sales reports

Ability to group items such as main course, dessert or beverages

Link multiple locations to head office

Set specific overtime levels

Create security levels for employees

Benefits

Control labour costs

Increase security

Gain a complete understanding of operating costs

Increase staff visibility

Decrease mistakes and lost time sheets

Accessories

Magnetic Card Swipe & Reader

Key Tag & Reader

Wrist Tag & Reader